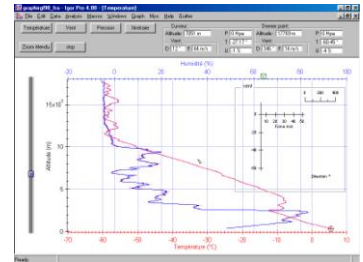




SR2K2 receiver

Main function of the SR2K2 upper-air radiosounding system consists in collecting P,T,U, and wind finding data measured and transmitted from a radiosonde during its flight through upper atmosphere layers



Functionalities

Processing of raw data

Reference GPS station for differential calculation

Data archiving on hard disk or any digital support

Real time Data display Listing and/or graphical

Sonde programming interface for frequency setting

GPS repeater for indoor initialization

Ground check system for T and U sensors

Editing of WMO code messages (Temp, pilot,...)

Data transmission through an Ethernet network

Desktop Workstation with Windows XP OS

Automatic Dual antenna system

Main features

Light and compact rack

Auto-tests with diagnostic display facilitating the maintenance

Omni directional antennas, easy handling and installation

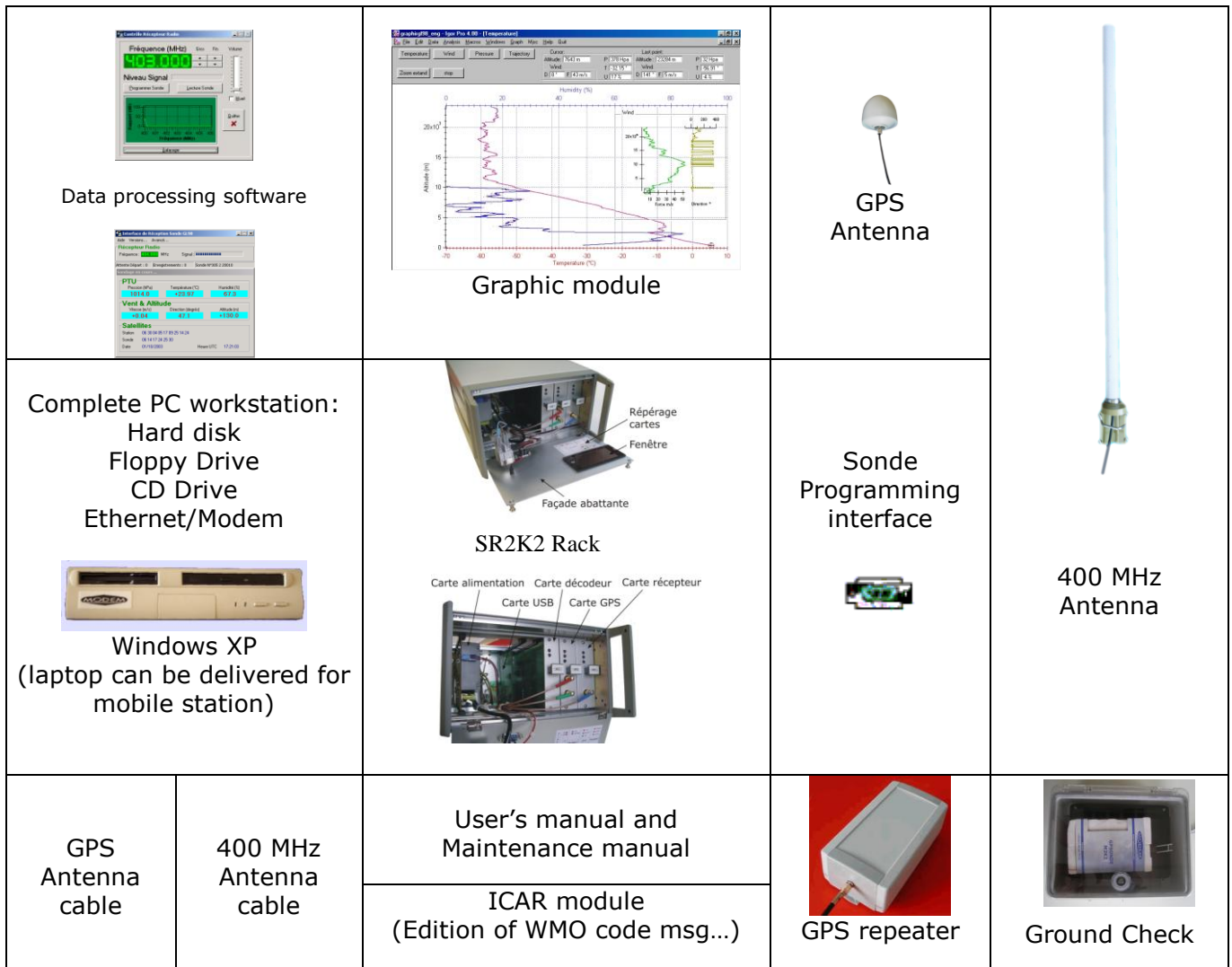
Compatibility with former generation of GPSondes

SR2k2 rack including :

- Decoder board,
- 400 Mhz receiver board,
- GPS receiver board(12 channels),
- USB board,
- Power supply board,
- Barometer board



SR2K2 UPPER-AIR SONDING SYSTEM DIAGRAM



SR2K2 TECHNICAL SPECIFICATIONS

GENERAL

- Dimensions : Rack half 19" - 235 mm - 310 mm - 132 mm
- Weight : 3.5 kg
- Consumption : 15 W
- Output : 2 serial links to PC
- Sonde prog. interface : cable with connector on the front panel
- GPS receiver : 14 channels
- Workstation : Desktop or Laptop PC

TELEMETRY

- Receiver : 400-406 MHz digital synthesizer
- Range : 250 Km
- Modulation : PSK

